

StegMark® Geo is an image watermarking solution specifically designed for large-scale, high-resolution satellite maps stored as Tiff / GeoTiff / BigTiff images. It allows users to embed copyright information, known as digital watermarks, into digital images. These digital watermarks are invisible to the human eye and once embedded, can be extracted from the image even if the image has undergone common image-processing (e.g. cropping, resizing, compression, etc). StegMark Geo is ideal for enterprises seeking to protect their valuable digital imagery assets.

Features

- **Robust (invisible) watermark** provides fingerprinting capability and is robust against common image processing “attacks” such as cropping, resizing, Jpeg compression, etc.
- **Visible watermark** adds an additional level of copyright deterrence. StegMark’s intuitive interface enables the user to customize the size, color and position of the visible watermark onto any portion of the image.
- **Adjustable watermark** strength allows the users to control the image visual quality while achieving maximum watermark robustness.

Applications

- **Fingerprinting:** User information can be added as fingerprint to trace the map content distribution.
- **Copyright Protection:** Ownership information can be embedded into the digital map as watermark and can later be detected if the copyrighted map is distributed illegally.

Potential Users

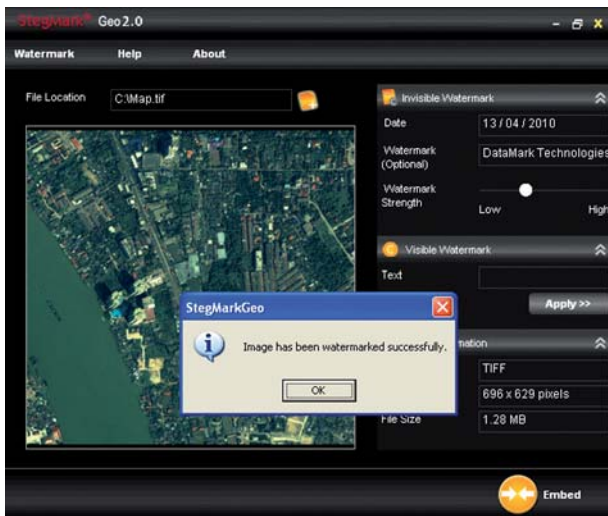
- Enterprises dealing with large-scale, high-resolution maps.
- Image broadcasting services.
- Any entity concerned with copyright protection of intellectual property.

StegMark® Geo Solution

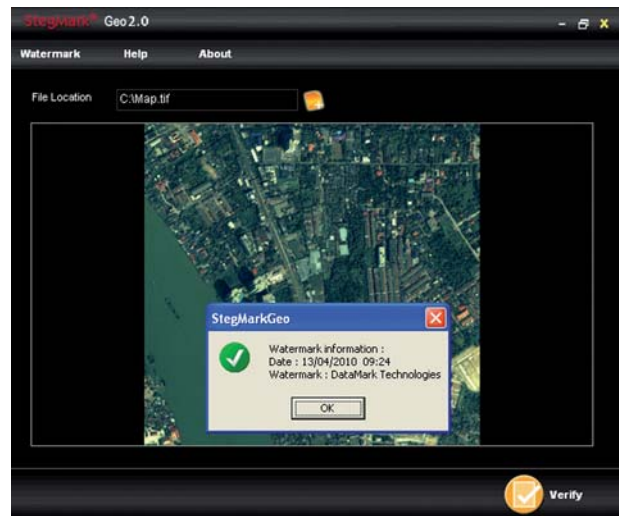
- **Software** Easy-to-use, standalone, GUI application designed for the end-user.
- **SDK** Simple command-line executable and COM DLL Library interface designed for the developers who can integrate StegMark Geo libraries into their project or develop applications around the library.

Technical Specifications

- **Supported File Formats** Tiff / GeoTiff / BigTiff
- **Color Space & Bit Depth** Grayscale (8 or 16 bits-per-plane)
RGB-color (8 or 16 bits-per-plane)
- **Compression** No compression (for images to be watermarked)
- **Watermark Payload** Customizable 20 alpha-numeric characters
- **Operating System** Windows® 2000, Windows® XP, Windows® Vista, Windows® 7, Windows® Server 2003 and Windows® Server 2008



StegMark® Geo Watermark Encoder (Map image: ©2010 Google)



StegMark® Geo Watermark Decoder (Map image: ©2010 Google)



DataMark Technologies Pte Ltd
100 Jurong East Street 21
Singapore 609602
Tel : 65687118
Fax : 65687226
Email : info@datamark.com.sg
Website : www.datamark.com.sg
Regn. No. 199804120W

DataMark Technologies Pte Ltd (DataMark), incorporated in Singapore, is a technology provider of patented digital watermarking technologies and solutions for the imaging world. Our StegMark software suite is the solution to your copyright and fingerprinting issues which creates a unique digital identity in all forms of digital media. These watermarks embedded into the media offer copyright protection, fingerprinting capabilities as well as authenticity assurance to the digital assets. In addition, these watermarks are imperceptible to the human eye and can only be detected with our algorithms. At DataMark, we understand the value and importance of our client's digital assets and always strive to develop innovative technology to secure their digital rights.